



# Scleroderma

---

RESEARCH FOUNDATION

## Scleroderma

---

RESEARCH FOUNDATION

220 MONTGOMERY STREET, SUITE 484  
SAN FRANCISCO, CA 94104

800.441.CURE  
info@srfcure.org  
Tax ID #68-0087234  
www.srfcure.org

2019 ANNUAL REPORT

## Dear Friends,

It's been over 30 years since our friend, founder and inspiration, Sharon Monsky, challenged us to achieve one overarching goal: find a cure for scleroderma and then close the doors. We remain as dedicated today as ever despite a variety of challenges — including the pandemic that shut down the country and most of the research labs that we fund. However, for the period of this report (through the end of 2019), we have continued to make exciting progress for our patients.

As we have changed our fiscal year, this report will cover two periods: FY 2019 ending April 30, 2019 and a stub year for the remainder of 2019. Henceforth, we will report on a calendar year basis.

This 2018-19 period has been an especially significant one for us. As you know, the Scleroderma Research Foundation is the leader in nonprofit funding of scleroderma-oriented research. Over the 19 months ending December 2019, the SRF has been able to leverage its reputation for research leadership and its established role in bringing world-class talent to the problem of scleroderma. Those efforts have made a significant impact on translational and clinical issues that directly affect the patient community. Among the key accomplishments:

- **Novel drugs for our patients:** We were granted a major speaking slot as a patient advocate at the July 2019 FDA AdCom meeting in Bethesda, MD, which was convened to consider whether to recommend approval of the first drug for scleroderma fibrotic lung disease. And we are delighted to report that in September 2019, this drug (Boehringer Ingelheim's Ofev) was approved and is now a part of the arsenal that physicians have for this challenging complication of scleroderma.
- **GRASP:** The SRF hosted a meeting of the GRASP (Genome Research in African American Scleroderma Patients) consortium at the NIH in May 2019 punctuating a productive period for the consortium which included additional publications.
- **New disease measures:** We partnered with the Scleroderma Clinical Trials Consortium to deploy the Betty Benedict legacy gift towards the development of an essential resource that is still missing in the community: an accurate measure of disease activity that is sensitive to small changes.
- **Research community leadership:** We hosted our annual SRF Science Workshop in April 2019, bringing together all SRF funded researchers, advisors and selected guests. We continued our sponsorship of the International Scleroderma Workshop — a biannual meeting of scleroderma researchers from around the world, which took place in August 2019 in Cambridge, UK.
- **ACR leadership:** In November 2019, at the American College of Rheumatology meeting, attended by 30,000 rheumatologists from around the world, the SRF held major meetings to update the GRASP consortium, a Friends and Family networking dinner with Dr. Antony Rosen as speaker, and hosted a Conquer industry session as well as a Conquer Annual Meeting.
- At year end, we were delighted to report two fantastic **additions to the Scientific Advisory Board** — Dr. Dan Littman and Dr. Lloyd Klickstein. Their bios are presented in the body of this report and they are already diligently engaged in supporting our efforts.

Our mission and focus have not changed, but our presence and reputation as a leader in the field has allowed us to broaden our scope of influence and to expand the types of research we support.

A noteworthy achievement this year has been the advancement within CONQUER — a first-of-its-kind nationwide longitudinal registry that was founded and is run by the SRF. By the end of 2019, we enrolled over 300 unique patients and collected over 450 blood samples. As previously noted, this effort will yield the gold-standard database to track and understand the trajectory of scleroderma in the modern context. Clinicians and scientists and our pharmaceutical partners will use the underlying data in a variety of ways: To determine which disease features are associated with or predict outcomes;

identify patients requiring early/aggressive intervention — as well as those to watch — and, among other goals, drive more personalized and effective therapy for patients. As a critical, pre-competitive resource, we are delighted to report

**“It's because of your contributions that we have arrived where we are today, and are able to continue to move forward, onward, and upward.”**

that we have been able to partner with two companies on Conquer, and we are in advanced conversations about additional support. Thank you, **Boehringer Ingelheim** and **Actelion** for your leadership.

We also recognize that serious business sometimes requires serious fun. And since our beginning, *Cool Comedy • Hot Cuisine* has brought together friends along with world-class performers for a night of great food and laughter in support of scleroderma research. On behalf of all of us at the SRF, I offer my thanks to fellow Board Members Susan Feniger and Bob Saget for being our shining stars once again. This effort just keeps on giving. In the past period, we have held three events, two in NY and one in LA. Overall, these events raised over \$2.5 million for scleroderma research!

The creativity and commitment of our volunteers, including the indomitable grassroots Cure Crew, are pillars of the SRF.

Thank you! And our efforts to connect and communicate with our community via social media continue to evolve. We look forward to reaching out to you more frequently through multiple platforms and keeping you apprised, amused and inspired on a real-time basis.

The SRF maintains a lean team. In addition to our board of directors, scientific advisory board, and funded investigators, our San Francisco office is comprised of five tireless employees who are committed to our efforts. On behalf of Scleroderma Research Foundation, thank you for all your support.

It's because of your contributions that we have arrived where we are today, and are able to continue to move forward, onward, and upward.



Sincerely,

Luke Evnin, PhD  
Chairman

## SRF Leadership

### SRF Board of Directors

**Luke Evnin, PhD**  
Chairman

**Deann Wright, JD**  
Secretary

**Bob Smith**  
Treasurer

**Dana Delany\***  
**Sharon Dobie, MD**  
**Susan Feniger**  
**Eric Kau, MD**  
**David Knoller**  
**Violetta Merin**  
**Bob Saget**  
**Caryn Zucker**

### Founder

**Sharon L. Monsky**  
1953-2002

\*Emeritus

## Our Mission

The mission of the Scleroderma Research Foundation is to fund and facilitate the most promising, highest quality research aimed at improved treatment options and, ultimately, a cure for scleroderma.

### What We Do

Founded in 1987, The Scleroderma Research Foundation (SRF) is America's leading nonprofit investor in scleroderma research. Research is at the center of all we do, and we are singularly focused on bringing the best minds to work toward a cure for scleroderma. The SRF research program devotes most of its research budget to long-term fundamental discoveries in basic, translational and clinical projects. We seek to deepen knowledge and understanding of this life-threatening condition by facilitating collaboration among the world's top scientists and clinicians to open new doors to therapeutic development and ultimately, a cure.

### About Scleroderma

One of the most serious and complex of all rheumatic disorders, scleroderma is not a single disease, but a set of related disorders involving a similar set of symptoms, making a concise definition – and diagnosis – very difficult. The disease often causes the hardening and tightening of the skin and connective tissues, but depending on the subtype of illness, scleroderma also can severely damage the body's digestive, respiratory and circulatory systems. It can be disfiguring, debilitating and even deadly. Systemic sclerosis affects approximately 100,000 people in the U.S. and strikes men, women and children of all ages and ethnicities. However, 80% of those afflicted with the disease are women in the prime of their lives, 30-50 years old.

The cause of scleroderma is unknown, yet significant progress has been made in managing the symptoms and some of the most serious complications of scleroderma. People with the disease are living longer, fuller lives. Still, no therapies yet exist to halt or reverse the disease process.

## Our Guiding Principles

### We believe in collaboration.

We unite exceptional scientists and clinicians across many disciplines, in order to advance our understanding of scleroderma

### We promote discovery.

We invest \$2.0M+ annually to fund pioneering research studies led by the most gifted scientists, because **research is the key.**

### We advocate for comprehensive care.

The SRF helps to sustain Scleroderma Centers of Excellence so patients can receive the most comprehensive care

## Our Vision: A World Without Scleroderma

SRF Founder Sharon Monsky envisioned a future where those living with scleroderma would have access to new treatments, and ultimately, a cure. She proudly stated that the SRF was “in business to go out of business.” Today, over 30 years later, we are accelerating our understanding of scleroderma through our innovative research program. Our focus on medical research enables gifted researchers and clinicians to explore promising ideas, share encouraging findings, and take us closer to our goal every day.



## Scientific Advisory Board

The individuals on the SRF's Scientific Advisory Board (SAB) are some of the world's most honored and distinguished scientists, and give their time and insights freely to the SRF's research endeavors. These renowned researchers guide the Foundation's research program, evaluate research proposals, and make funding recommendations.

Each year, the SAB convenes and leads the annual SRF Science Workshop, which brings together thought leaders from diverse backgrounds, to exchange information and ideas. The results of this intensive work are new alliances and ideas that further develop the road map for vital research, which will lead to better treatments and ultimately to a cure for scleroderma.



**Bruce Alberts, Ph.D**

Chairman of the SRF Scientific Advisory Board  
*UCSF*

A renowned biochemist and distinguished professor at UCSE, Dr. Alberts has also been recognized for his leadership in science policy and education. He served two terms as the President of the National Academy of Sciences, three years as a U.S. Science Envoy, and he has received countless awards, including the National Medal of Science from President Barack Obama. Dr. Alberts is a member of the National Academy of Sciences.



**David Botstein, Ph.D**

Chief Scientific Officer  
*Calico Life Sciences*

An eminent geneticist whose research laid the foundation for the Human Genome Project, Dr. Botstein has been at the forefront of genomic research for decades. Having been a distinguished professor at MIT, Princeton and Stanford, he now leads the effort to understand the aging process at Calico, a Google company. A recipient of the Breakthrough Prize and numerous other prestigious awards, Dr. Botstein is a member of the National Academy of Sciences and the Institute of Medicine.



**Dan Kastner, MD, Ph.D**

Scientific Director  
*Intramural Program of the National Human Genome Research Institute (NHGRI)*

Dr. Kastner's distinguished career at the NIH has been focused on using genetic and genomic strategies to understand inherited disorders of inflammation. Prior to joining the NHGRI, Dr. Kastner, a rheumatologist, also served for many years as the Clinical Director of the Intramural Program of the National Institute of Arthritis and Musculoskeletal Diseases (NIAMS). He has received numerous awards, including the NIH Director's Award, and the Service to America Award ("Sammie") as the Federal Employee of the Year. Dr. Kastner is a member of the National Academy of Sciences and the Institute of Medicine.



**Lloyd Klickstein, MD, Ph.D**

Chief Innovation Officer  
*Adicet Bio, Inc.*

Dr. Klickstein, a rheumatologist and immunologist, has had a long and successful career in the biopharmaceutical industry and biomedical research. Prior to joining Adicet Bio, Inc., he served for thirteen years at Novartis as the Head of NIDU — the unit that researches new drug targets and evaluates them for potential drug development. Prior to his industrial career, he was a physician-scientist over more than a decade with his own successful lab at Harvard's BWH where he also had a clinical practice. Dr. Klickstein also serves as an independent board member at Blade Therapeutics.



**Dan Littman, MD, Ph.D**

New York University  
*Howard Hughes Medical Institute*

Dr. Littman, a world-renowned immunologist, heads a large research group at NYU that focuses on T cells, a critical cell of the adaptive immune system and its role in inflammatory diseases. Dr. Littman also has extensive biopharmaceutical experience, currently serving on the Board of Directors of Pfizer and having founded two biotech companies: Vedanta Biosciences, Inc. and Orca Pharmaceuticals, Ltd.. Dr. Littman has been an Investigator of the Howard Hughes Medical Institute since 1987 and is a member of the National Academy of Sciences and the Institute of Medicine.



**Antony Rosen, MD**

Vice Dean for Research  
*Johns Hopkins University*

A Distinguished Professor at Johns Hopkins University and a rheumatologist, Dr. Rosen's research focuses on autoimmunity in the rheumatic diseases. By studying subgroups of patients with distinct phenotypes, disease trajectories and specific autoimmune responses, his research group is at the forefront of identifying the molecular mechanisms that are disrupted in scleroderma. Dr. Rosen is also the Chair of the Department of Rheumatology and Co-Director of the Johns Hopkins Precision Medicine Initiative.



**Bruce Wintroub, MD**

Chair of Dermatology  
*UCSF*

Dr. Wintroub is a Professor and Chair of the Department of Dermatology and Vice Dean of Medicine at UCSF. His research has focused on the interface of dermatology and immunology in several diseases that affect the skin, including scleroderma. Dr. Wintroub has also served as the Chairman of the Dermatology Foundation.

# Funded Grants and Ongoing Research Projects 2019-2020

INVESTIGATOR	INSTITUTION	RESEARCH PROJECTS
Franck Barrat, PhD Eric Meffre, PhD	Hospital for Special Surgery Yale University	Role of CXCR3 Agonists in the Generation of Autoreactive B cells in Scleroderma Patients
Francesco Boin, MD Fredrick Wigley, MD <i>In collaboration with</i> Dan Kastner, MD, PhD Pravitt Gourh, MD	Cedars-Sinai Johns Hopkins University School of Medicine  National Human Genome Research Institute National Institute of Arthritis & Musculoskeletal Disease	Genome Research in African American Scleroderma Patients (The GRASP Project)
Livia Casciola-Rosen, PhD Ami Shah, MD	Johns Hopkins University School of Medicine	Cancer Detection Strategies in Patients with Scleroderma
Howard Chang, MD, PhD	Stanford University School of Medicine Howard Hughes Medical Institute	Gene Regulatory Mechanisms in Scleroderma Epigenetics of Sex Differences in Scleroderma Scleroderma Twin Study
Lorinda Chung, MD, MS	Stanford University School of Medicine	Stanford Scleroderma Center of Excellence
Lorinda Chung, MD, MS Paul Wolters, MD	Stanford University School of Medicine University of California, San Francisco	Northern California Scleroderma Research Consortium
Erika Darrah, PhD Eleni Tiniakou, MD	Johns Hopkins University School of Medicine	POL3-specific CD8+ T Cells as the Link Between Scleroderma and Anti-tumor Immune Responses  Naturally Presented Topoisomerase Epitopes in Scleroderma Patients with HLA-DPB1*13:01
Hal Dietz, MD	Johns Hopkins University School of Medicine Howard Hughes Medical Institute	Novel Therapeutic Vulnerabilities in Systemic Sclerosis and Fibrosis
Benjamin Korman, MD	University of Rochester	Assessment of the Complement Cascade as a Novel Biomarker, Genetic Risk Factor, and Treatment Target for Scleroderma-Associated Pulmonary Arterial Hypertension (SSc-PAH)
Zsuzsanna McMahan, MD	Johns Hopkins University School of Medicine	Measuring and Objectively Characterizing Patterns of Gastrointestinal Dysmotility in Scleroderma
Zsuzsanna McMahan, MD Jay Pasricha, MD	Johns Hopkins University School of Medicine	Discovery of Novel Autoantigens in Scleroderma Patients with Gastrointestinal Dysmotility
Ruslan Medzhitov, PhD	Yale University Howard Hughes Medical Institute	Macrophage-Stromal Cell Interactions in Tissue Homeostasis and Fibrosis
Dr. Kathryn Torok, MD	Pittsburgh Children's Hospital	Identification of Novel Pathogenic Genes in Juvenile Systemic Sclerosis
Gerlinde Wernig, MD	Stanford University	Immune Checkpoint Inhibitors as Antifibrotic Therapy for Scleroderma
Michael L. Whitfield, PhD	Geisel School of Medicine at Dartmouth	Molecular Subsets, Integrative Genomics and Tissue Models of Scleroderma
Fredrick Wigley, MD	Johns Hopkins University School of Medicine	Johns Hopkins Scleroderma Center of Excellence
Scott Zeger, PhD Antony Rosen, MD Livia Casciola-Rosen, PhD Laura Hummers, MD, MPH Fredrick Wigley, MD Ami Shah, MD	Johns Hopkins University School of Medicine	Scleroderma Lung Disease Trajectory Study

## Research is the Key



Each year, the SRF receives and evaluates applications for research projects aimed at understanding the biological processes that go awry in scleroderma and how these might be addressed therapeutically.

The process for determining which projects get funded is holistic. We ask numerous questions in considering projects for funding, such as: does this project answer a fundamental question about the scleroderma disease process? Would this project yield unique insights into targeting therapies to patients?

We also consider the investigator's potential contributions to the SRF research program with questions such as: would this project and investigator contribute unique and relevant cross-disciplinary insights to our understanding of scleroderma? Does the investigator have the appropriate skills, background and access to excellent mentorship, if needed, to accomplish the project goals? Will this investigator make a real effort to add to our community through collaboration and generous sharing of ideas or resources?

All applicants, whether new or seeking continued funding, present their projects to the SRF's Scientific Advisory Board and other attendees at the SRF Annual Workshop. There, assumptions are challenged, the project's relevance and limitations are probed, and constructive critique and collaborative discussion ensues.

It is worth noting that, at the end of the process, there are always worthy projects that the SRF cannot fund, due to budgetary considerations. Our goal, and deepest hope, is to continue to expand the SRF's ability to fund great research in our search for a cure.

In the following pages, please read about a few selected research projects.

## Featured Projects from the 2019-2020 SRF Research Program

### Epigenetics of Sex Differences in Scleroderma

**Howard Chang, MD, PhD**

Stanford University of Medicine,  
Howard Hughes Medical Institute

#### PROJECT OVERVIEW

One of Dr. Chang's SRF-funded projects aims to discover why four out of every five scleroderma patients are female, which he believes is connected to special features of the X chromosome. While there are two X chromosomes in every cell in a female body, every cell in a male body contains only one X chromosome plus a Y chromosome. In order to balance the gene products from the female X chromosomes to what is produced in male cells, one X chromosome is silenced in every female cell through a process called X-inactivation. Dr. Chang believes that this process of X-inactivation and the cellular machinery that carries it out might be involved in females' increased susceptibility to scleroderma (as well as many other autoimmune diseases). In their quest to understand how X-inactivation might be involved, Dr. Chang's group has discovered that many proteins that are autoantigens for autoimmune diseases work together with a special RNA molecule in silencing the extra X chromosome and they are investigating whether this association is involved in initiating autoimmunity. Dr. Chang's group is also working to develop an animal model to further examine why autoimmunity might be skewed toward females.

### Molecular Subsets, Integrative Genomics and Tissue Models of Scleroderma

**Michael Whitfield, PhD**

Dartmouth University  
School of Medicine

#### PROJECT OVERVIEW

Dr. Whitfield has been working for many years to develop a classifier via an artificial intelligence algorithm for scleroderma patients based on gene expression data. The goal is to predict how individual patients might respond to a given treatment. Because certain scleroderma treatments can be risky, or have serious side effects, it would be hugely advantageous for patients to understand upfront whether they are likely to respond to a potential treatment. For example, in the SCOT (Scleroderma: Cyclophosphamide or Transplantation) trial, blood samples taken from patients prior to treatment were examined by Dr. Whitfield using his classifier. The classifier assigned each patient to one of three possible categories based on gene expression data obtained from their pretreatment sample. After determining which patients responded to transplantation and which didn't, each of the three categories was analyzed to see if it was able to predict a response or not. The classifier was able to identify one category of patients likely to respond to transplantation while also identifying a category of patients that would likely NOT respond to transplantation. Dr. Whitfield hopes to be able to obtain additional samples from patients undergoing transplantation therapy to confirm these results. He is also working with other clinical trials to further explore the use of his classifier for predicting responsiveness to other treatments.

### Measuring and Objectively Characterizing Patterns of Gastrointestinal Dysmotility in Scleroderma

### Discovery of Novel Autoantigens in Scleroderma Patients with Gastrointestinal Dysmotility (in collaboration with Dr. Jay Pasricha, MD, Johns Hopkins University School of Medicine)

**Dr. Zsuzsanna McMahan, MD**

Johns Hopkins University  
School of Medicine

#### PROJECT OVERVIEW

Gastrointestinal (GI) disease is a common and often early complication for scleroderma patients. Its presentation varies from patient to patient, meaning that in individual patients, different parts of the digestive tract can be affected. The severity of GI dysfunction also varies. However, research on scleroderma GI disease has historically been lacking; thus, while subgroups of GI disease are thought to exist, too little data exists to definitively characterize different patterns of disease. Dr. McMahan is a Principal Investigator for two different SRF-funded GI projects aiming to generate additional data to help define subgroups of patients with different patterns of GI dysmotility. Subgrouping would help physicians better understand and treat the disease and even potentially to develop more tailored treatments. In one project, Dr. McMahan obtains direct measurements of transit time through the gut of scleroderma patients and will be able to determine overall variation in transit times as well as different patterns of transit. In a joint project with Dr. Jay Pasricha, Dr. McMahan is working to discover novel autoantigens in scleroderma patients with GI dysmotility and to determine if the autoantibodies associate with or can identify different subgroups of GI disease. By assessing patterns of gut transit, and correlating these patterns with known and novel autoantibodies, Dr. McMahan and her collaborators will enable researchers to better study GI disease in scleroderma and potentially to develop targeted treatments.

### Assessment of Complement Cascade as a Novel Biomarker, Genetic Risk Factor, and Treatment Target for Scleroderma-Associated Pulmonary Arterial Hypertension (SSc-PAH)

**Dr. Ben Korman, MD**

University of Rochester

#### PROJECT OVERVIEW

Scleroderma patients are frequently affected by vascular complications, which include Raynaud's phenomenon, digital ulcers, cardiovascular disease, and pulmonary hypertension. Pulmonary arterial hypertension (PAH) is a type of high blood pressure that affects the arteries of the lungs and the right side of the heart. Scleroderma-associated PAH (SSc-PAH) is a severe vascular manifestation of scleroderma that currently has poor outcomes, is under-diagnosed, has no established biomarkers, and responds poorly to standard pulmonary hypertension medication.

The complement cascade is an important part of the immune system that helps to clear microbes and damaged cells. Dr. Korman and his research group are studying the potential role of the complement cascade as a risk factor for SSc-PAH, a marker of disease onset and severity, and a potential treatment target for SSc-PAH. They have shown that circulating levels of complement factor D are altered in patients with scleroderma and particularly in patients with pulmonary hypertension. Further characterization of patients with SSc-PAH and mouse models of PAH have shown additional abnormalities in certain parts of the complement cascade. In evaluating the role of complement in SSc-PAH, Dr. Korman is using several different approaches. They are analyzing data from large-scale genetic studies (including the GRASP Project—see page 11) to evaluate variation in complement genes as a risk factor for SSc-PAH. They are also analyzing blood from SSc-PAH patients to evaluate the levels of various complement factors as possible SSc-PAH biomarkers. To assess whether blocking complement may be an effective therapeutic strategy for treating SSc-PAH, they will use genetic and pharmacologic approaches to treat mice with PAH and abnormalities in lung complement.

# CONQUER



# grasp

GENOME RESEARCH IN AFRICAN AMERICAN SCLERODERMA PATIENTS

2019-2020 brought noteworthy achievements in the advancement of **CONQUER** (COLlaborative, NATIONAL Quality and EFFicacy Registry), a first-of-its-kind, nationwide, longitudinal patient registry for scleroderma patients that was founded and is run by the SRF. As of mid-2020, CONQUER has enrolled over 300 unique patients. For each patient, clinical data and blood samples are periodically collected. This effort will yield a rich database and biorepository that can be used to track and understand the trajectory of scleroderma in different subsets of patients.

Additionally, clinicians, scientists and our pharmaceutical partners will use the underlying data to:

- determine which disease features are associated with or predict outcomes
- identify patients requiring early/aggressive intervention—as well as those to watch
- drive more personalized and effective therapy for patients.

As a critical, pre-competitive resource, we are proud to partner with our generous CONQUER corporate sponsors: Boehringer Ingelheim and Actelion. The SRF is grateful for their leadership and we look forward to including additional corporate partners in the coming year.

PARTICIPATING INSTITUTION	INVESTIGATOR
Columbia University	Elana Bernstein, MD, MSc
George Washington University	Victoria Shanmugam, MD
Georgetown University	Virginia Steen, MD
Hospital for Special Surgery	Jessica Gordon, MD
Johns Hopkins University	Ami Shah, MD Laura Hummers, MD, MPH
Mass General Hospital	Flavia Castelino, MD
Medical University of South Carolina	Faye Hant, DO, MSCR
Northwestern University	Chase Correia, MD
Stanford University	Lori Chung, MD, MS
University of Michigan	Dinesh Khanna, MD
University of Pennsylvania	Nora Sandorfi, MD
The University of Texas Health Science Center at Houston	Shervin Assassi, MD
University of Utah	Tracy Frech, MD

Previous epidemiological studies have indicated that African Americans are more likely to get scleroderma than Americans of European ancestry; they also tend to have an earlier age of onset of scleroderma and more severe disease. The Genome Research in African American Scleroderma Patients (GRASP) Project was established to enhance our understanding of the clinical manifestations of scleroderma in African Americans and to perform genomic analyses with the aim of identifying key factors contributing to the onset and severity of their disease.

The GRASP Project has obtained clinical data from a sufficiently large population of African American patients for researchers to better understand scleroderma in African American patients. Using the GRASP clinical data, researchers have confirmed the increased incidence, earlier age of onset and more severe disease in African American patients. They are also developing a better understanding of how scleroderma typically presents in African American patients, which will aid physicians in treating them.

Another goal of the GRASP Project is to generate a large set of genomic data, through DNA sequencing of scleroderma patient samples and control patient samples from other studies, that can be compared and used to determine whether specific scleroderma clinical manifestations correlate with specific DNA variants. Through these associations, researchers hope to learn about DNA variants that might affect scleroderma susceptibility, age of onset and disease severity. To achieve these goals, a large cohort of African American scleroderma patients has been gathered and clinical data as well as DNA samples have been collected from all enrolled patients.



The GRASP cohort currently consists of more than 1,300 extensively evaluated African American scleroderma patients enrolled from 23 participating US academic centers. This is the largest multi-center cohort of African American scleroderma patients ever studied. The SRF has been instrumental to the development of the GRASP Project since the very beginning.

The strong partnership with the GRASP leadership and the continued financial support provided by the SRF has enabled the participation of a large number of academic centers in the GRASP consortium. Moreover, the SRF has provided the perfect framework for GRASP: an environment that encourages brainstorming, formulation of ambitious research goals, and streamlined collaboration among leaders in the field of scleroderma research and clinical care.

# COOL COMEDY HOT CUISINE

Since its inception in 1986, *Cool Comedy • Hot Cuisine* (CCHC) has become our signature fundraising event, featuring some of the world's greatest comedians and performing artists –all of whom donate their time and talents to support the SRF's innovative research programs and help raise awareness about this rare autoimmune disease.

For more than 30 years, CCHC has been led by the indefatigable efforts Board members **Bob Saget** and **Susan Feniger**. Attendees have included generous partners and supporters from the entertainment world and corporate industries, as well as patients, physicians and many other who have been directly or indirectly affected by scleroderma.

In this past period, three CCHC events, two in New York and one in Los Angeles, collectively raised an amazing \$2.5 million to support the work of the SRF and our commitment to finding improved treatments and – one day – a cure for scleroderma!

## 2018 New York Highlights



Bob Saget and Susan Feniger



Live auction with Bob Saget, Susan Feniger, Andy Cohen and Elizabeth Falkner



Jeff Ross, Bob Saget, Jackson Browne and Dave Attell

## 2019 Los Angeles Highlights



Ray Romano



Ken Jeong, Norman Lear and Bob Saget



John Mayer



Macaulay Culkin, Bob Saget, and Seth Green



John Mayer, John Stamos, Bob Saget and Dave Chappelle



# COOL COMEDY HOT CUISINE

## 2019 New York Highlights



Bob Saget, Gilbert Gottfried, Susan Feniger and John Oliver



Deann Wright, Bob Saget and Luke Evnin



Melissa Tarantino, Erin Murtha, and Lucille Miller



Michael Che



Bob Saget and Gilbert Gottfried



Jim Gaffigan



John Oliver



Bob Saget and Susan Feniger



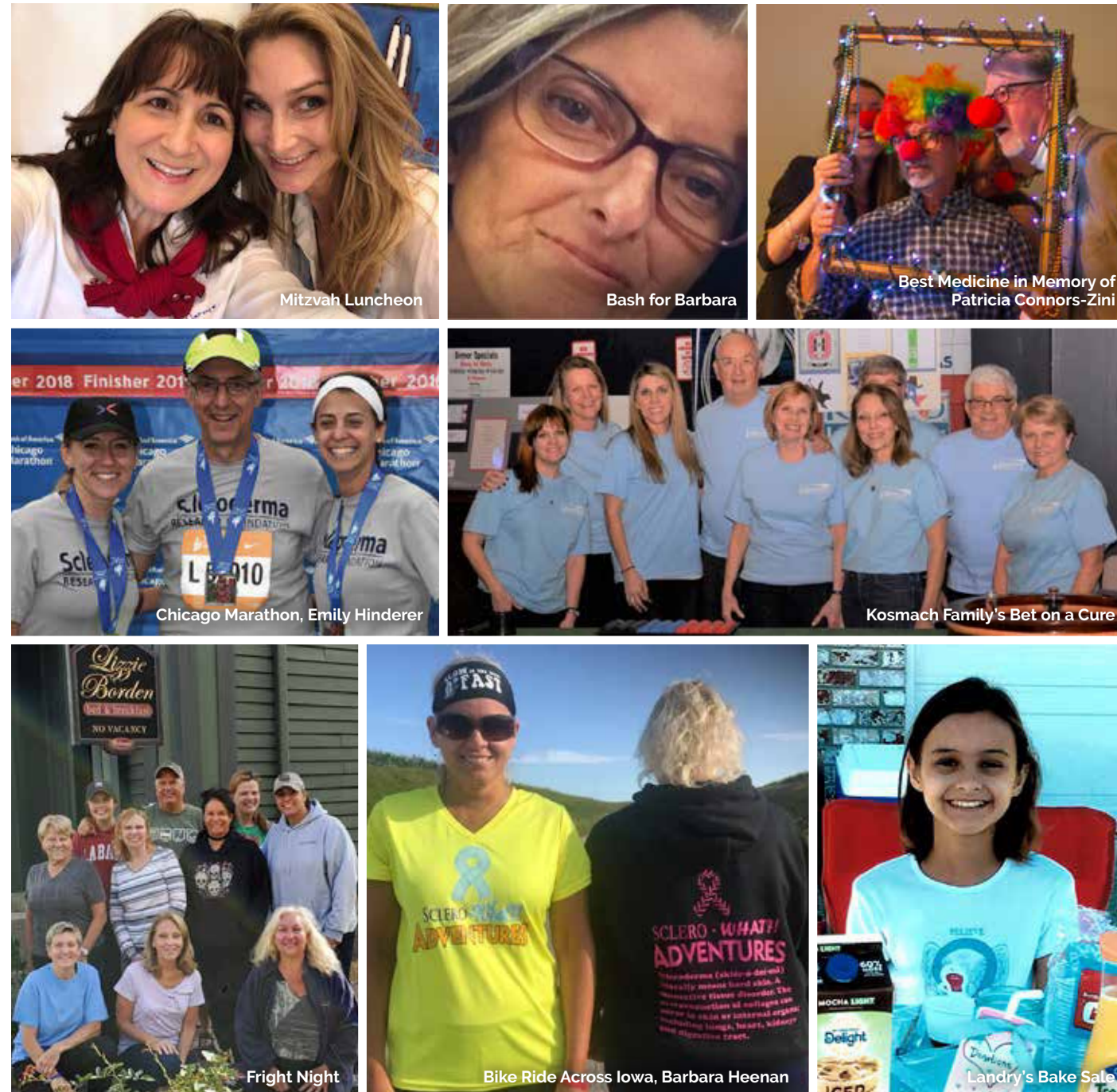
Susan Feniger and the Hot Cuisine team

# Cure Crew

A volunteer network where **YOU** can make a difference!

Cure Crew members make a real impact in the lives of people living with scleroderma and their loved ones – as well as honoring those who have died from complications caused by the disease. They know that lack of awareness causes delays in treatment or misdiagnosis, and funding research is the best hope of finding a cure. At the very heart of the program are people joined for a shared cause doing what they enjoy while helping to raise funds and awareness.

In 2019 our Cure Crew members raised the bar by launching awareness-building campaigns, creating 2,607 Facebook fundraising pages and organizing innovative charity events. Their efforts inspire us and the scleroderma community to work together to find a cure!



# Powering Our Research Until There's a Cure

Our ability to advance important science and facilitate the development of new treatments for all types of scleroderma is only possible with generous donor support. Acknowledgments listed here reflect contributions of \$250 or more made to SRF between May 2018–December 2019.

## \$50,000+

Actelion Pharmaceuticals US, Inc.  
 AE Family Foundation  
 Arthur Zimbaum Foundation, Inc.  
 Estate of Bert Z. Benedict  
 Boehringer Ingelheim Pharmaceuticals Inc.  
 Eversheds Sutherland  
 Judy Evnin and Dr. Tony Evnin  
 Dr. Luke Evnin  
 Estate of Shane M. Flann  
 The Kao Family Foundation  
 Andy and Vi Merin  
 Brooke Musselman  
 The Nancy P. and Richard K. Robbins Family Foundation  
 Mark Scher  
 Deann Wright

## \$25,000 - \$49,999

Estate of Maria D. Anargyros  
 The Anita May Rosenstein Foundation  
 Corbus Pharmaceuticals, Inc.  
 Coretz Family Foundation  
 Tim and Mary Evnin  
 Dr. Jeff Gevirtz  
 Joseph Hulston  
 Lamb Family Foundation  
 Thomas Osborne and Joan Lowry  
 John Mayer  
 Redbox  
 Adam and Tracey Stern

## \$10,000 - \$24,999

John and Debra Apruzzese  
 BCS Private Wealth Management  
 Joel and Bonnie Bergstein  
 Blade Therapeutics, Inc.  
 Kevin and Claudia Bright  
 Sara and Buddy Campbell  
 Andrea Okamura and Jeff Chambers  
 Macaulay Culkin  
 Dana Delany  
 Vin and Erica Di Bona  
 Dr. Sharon Dobie  
 Jon and Robin Dracos

Robert and Dana Emery  
 Debbie and Greg Grisamore  
 Bill and Marjorie Holodnak  
 Mary Lou Houle  
 Henry Jones  
 Alan and Donna Kaminsky  
 Eliz Lee and Dr. Eric Kau  
 Estate of Mary Keith  
 Kraft - Engel Management LLC  
 Lear Family Foundation  
 Norman and Sarah Livingston  
 Kimbrough Towles and George Loening  
 Rhonda Mace  
 Scott Matis  
 George and Suzanne Montgomery  
 MTS Health Partners, LP  
 National Christian Foundation  
 Brian Newkirk  
 Shawn Anderson and Rob O'Neill  
 Loren Ostrow  
 Robert and Sula Pearlman  
 Craig Smith and Laura Pope  
 Mr. and Mrs. Steven J. Pozycki  
 Paul and Mindy Pressler  
 Dr. William Prinzmetal  
 Bob Saget  
 Bob and Laurie Smith  
 Robert and Colleen Stave  
 Eytan Sugarman  
 Estate of Clinton Ternstrom  
 Michael and Jovan Trapani  
 Paul Wempner  
 Sandy and Barbara Wernick  
 Dr. Marc Trachtenberg and Vicky West  
 Robert and Elaine Witkoff  
 Estate of Mary Ann Wolff  
 David Ziegler  
 Matthew Zito  
 Caryn Zucker

## \$1,000 - \$9,999

Kenneth and Joy Abrams  
 Robert and Annmarie Adamo  
 Advance Realty  
 John Alascio  
 Stephanie Allen  
 Meredith and Mark Allister  
 Mr. and Mrs. Randy Alpert

Richard and Christina Ambrosini  
 Appraisal Service, Inc.  
 Arbor Assays  
 The Artists & Athletes Alliance  
 The Art Laboe Foundation  
 James and Carol Babcock  
 John and Audrey Bamberger  
 Ed Barsocchi  
 Richard Baskin  
 Robert and Lisa Bates  
 Joshua Force and Mara Baumgarten Force  
 Reginald and Margaret Bayley  
 Bellini Foundation  
 Seth Bergstein  
 David and Gayle Bernhaut  
 Mr. Geoffrey Bauer and Dr. Elana Bernstein  
 Evan Bernstein  
 Mary Bertolli  
 Pete and Lynn Bienstock  
 The Barbara and Gary Brandt Family Foundation  
 Brillstein Entertainment Partners  
 Alan Brown  
 Jordan Brown  
 Sari Brown  
 Bulfinch  
 Jory Burton  
 Monica Bustamante  
 Michael and Tracey Byrne  
 Philip and Amy Capell  
 Harold and Faye Careway  
 Audrey Carlin  
 Aaron and Edythe Carr  
 Geneva Carr  
 Fred Chamberlain  
 Mr. and Mrs. John B. Christy  
 Lisa Clerie  
 Andy Cohen  
 Gayle Cohen and Dr. Maurice Cohen  
 Dennis Coit  
 Scott Constantine  
 Sandra and Robert Corddry  
 Sean Coughlin  
 Bob and Peggy Crowther  
 Darrel Cummings  
 Amy Edmondson and

## Our Generous Donors

### \$1,000 - \$9,999 (continued)

Dr. George Daley  
Mr. and Mrs. H. P. Desmond  
Eugene Diaz  
Dennis and Cindy Dillon  
Anthony DiTommaso  
Chuck and Linda Duvall  
Bob Eide  
Environmental Chemical Corporation  
Adam and Allison Epstein  
Mark Epstein and Karen Schub Epstein  
Resa Evans  
Michelle Helyn Mulitz and Ben Feldman  
Thomas A. Feldmar  
Liz Lachman and Susan Feniger  
Bill and Sally Feniger  
Mike and Angie Ferraro  
Tony and Julie FitzPatrick  
Robert Force

Jack and Julie Heller  
The J.W. Heller Foundation  
Janet Hemley  
Sandra Heppenheimer  
Sherley Higuera  
The Hill Family Charitable Foundation  
Emily Hinderer  
Eric and Tara Hirshberg  
Gerry Hodes  
Mr. and Mrs. Hal Holloway  
Donald Holmes  
J. Honit  
Hospital for Special Surgery  
Robert and Marcia Hunter  
Hunter Insurance  
Edward and Sharon Hurwitz  
ICM  
Investcorp

Ruth Lindgren  
John and Susan Livingston  
Alix Marduel and Tom Lockard  
Lynn MacDonald  
Scott and Carolyn Mace  
Farah Mahesri  
Mark and Kate Mai  
Estate of Thomas Malanowski  
Barbara Malina  
Mark Maloney  
Dr. Scott Stanwyck and Dr. Deborah Manjoney  
Dr. Delia Manjoney  
Bill and Marina Marcoux  
Dr. William Markson and Jane Sanders Markson  
Richard Martinez  
Steve and Jean Mayer  
Les and Renee McNair  
Carlos Medina  
Mr. and Mrs. Michael Meiners  
Dr. Vahe Melkonyan and Marina Melkonyan  
Peter Melnick  
George Mikulski  
Keith and Lucille Miller  
Dr. Larry Miller and Olivia Miller  
Philip and Joan Miller  
Dr. and Stephen Miller  
Josh Schweitzer and Mary Sue Milliken  
Samuel Morreale  
Angela and Briggs Morrison  
Mr. Warren Mulston  
Lily Munro Coffman  
Joe Muroff  
Tom and Martina Murphy  
Erin Murtha  
Patricia Musanti  
Mr. and Mrs. Burt E. Myrick, Jr.  
Arnie and Sherri Nelson  
Netflix  
Norvin Partners Ltd.  
Bobbi O'Hara  
Ashley Olsen  
Dr. Robert Palumbo and Joanne Palumbo  
Paramount Pictures Group  
Daniel and Judy Pepper  
Permut Presentations, Inc.  
Andrea and Paul Pett-Joseph  
Pigpen & Paper, Inc.  
Ed and Lynn Poole  
John & Sue Prange Trust  
William and Natalie Raaths  
Richard Rabin  
Vandana Rao  
Deborah Rennard  
Angela and Richard Renneke  
Christine and Bob Reznick  
Christos and Dana Richards  
John and Diane Riley

Edward and Lida Robinson Charitable Trust  
Nina Rodriguez  
Jeff Ross  
Karen Ross  
Mr. and Mrs. Anthony E. Rothschild  
Mike Royce  
Richard Russell  
Melissa and Kevin Ryder  
Tony Giannini and Allison Saget  
Michael Saupp  
Rosalind and Franklyn Schaefer Family Foundation  
Diane Kosmach and Michael Schumacher  
Josh Schweitzer  
Linda Sciuto  
Jeff and Martha Seaman  
Geoff and Janice Sears  
The Seligsohn Foundation  
Kyle Shanklin  
Katie Shapiro  
Shapiro/West Associates, Inc.  
Shawangunk Valley Conservancy  
Christine Silver  
Bradley and Alyson Smith  
Mr. Wade Damey and Dr. Catherine Smith  
Brad Smith  
James Smith  
Southpoint Capital Advisors LP  
Susan Stremple and Bruce Stein  
Ken and Mary Jo Stillwagon  
Dr. David Cowburn and Dr. Liz Stoner  
Laurence Eliot Stuart  
Dr. William Swenfurth and Mary Alice Swenfurth  
Marjorie A. Swig  
The Swig Foundation  
Mark and Kathy Taylor  
Tenacious Holdings Inc.  
Mr. and Mrs. Michael R. Teodoro  
Teri's Run Foundation  
Mr. and Mrs. F. D. Terry  
Melinda Thompson  
Mr. and Mrs. Carl Thomsen  
Ruth Tobin  
Michael Sasso and Rob Tufel  
Luke Wachter  
Harlan Waksal  
Dr. Lucy Waletzky  
Walther Partners Inc.  
Warner Bros. Entertainment Inc.  
Debbie Warren  
Brad Weinberg  
Andrew and Lauren Weisenfeld  
David Welch  
Wells Fargo Advisors  
David Welsh  
Westmount Asset Management, Inc.  
Kurt and Kim Wheeler  
Mark and Patti Wiggins

Dr. Steve Williams  
Susie and Jamie Williamson  
Geof Wills  
Lenny Wilson  
Marc Wiseman  
Linda Tsiu and Gordon Wong  
Mr. and Mrs. Gary Wright  
Amy Yoney  
Michael and Joan Zaccaro  
Frank Zampini

### \$250 - \$999

Erica Adler  
Shari and Edward Adler  
Airco AC and Heating Co.  
Elizabeth Allen  
James and Judy Allison  
Erin Amico  
Mr. and Mrs. George Anast  
Ms. Tess Ayers and Ms. Jane Anderson  
Vickie Anderson  
Michael Ang  
Dr. Sanaa Arastu  
Kathleen Arnold  
Bobby Atkinson  
Automated Wire Products, Incorporated  
Beena and Faisal Azeem  
Back 2 Health Family Wellness Center  
Anne Bages  
William Bancroft  
Dale Barton  
Lisa Belo Mocho  
Mark and Donna Bengtson  
Bonnie Bernstein  
Luis Berrueta  
Kenneth Billington  
Melissa and Zackary Bilotti  
Dr. Neal Birnbaum and Linda Birnbaum  
David Suhl and Patricia Bizzell  
Jeff Blake  
John and Alice Blannett  
Mary Joan Borsheim  
Rahul and Anjan Bose  
Mr. and Mrs. William Bozeman  
Soni Bringas  
Kathy Brokaw  
Skip Bronkie  
Karen and David Brooks  
Ho Brown  
Robby Browne  
Janis and Thomas Brunell  
Bob Buchi  
Mr. and Mrs. Kenneth B. Burns  
Mark Burns  
Mark Butler  
Anthony Campitiello

Karen Capello  
James and Martha Caron  
Travis and Minnie Carr  
Jennifer and Paul Cayer  
Mr. and Mrs. Michael W. Chastain  
Mr. Simon Bloch and Ms. Denise Chilow  
Karen Chou  
The Cleveland Foundation  
Curtis and Connie Coffman  
Dan Cohen  
Eric Cohen  
Gregory and Arielle Cohen  
Anthony and Judith Contrafatto  
Louis Coppola  
Mr. and Mrs. Albert C. Corbin  
Mary Corman  
Preston and Rosemary Cowie  
Darren Criss  
Kevin and Phyllis Crotty  
Craig Cummings  
Frank and Shirley Dalle-Molle  
Tanya DeLara  
Katherine DeLeon  
Christian Delfino  
Amarpal Dhaliwal  
Sid Dhawan  
Mr. and Mrs. Thomas D. Diggs  
Brian Dobbie  
Bill Dobie  
Christine DuBose  
Sally Nagel and Jim Dwyer  
Dr. Charles Dye and Angela Dye  
Timothy and Coleen Dziak  
Daniel O'Brien and Erica Eckman  
Mr. and Mrs. John Edgar  
Antonio and Kerry Edmonds  
Dr. Jaci Eisenberg  
Bryan Kramer and Trent Eisenberg  
Mohamad El Masri  
Jonathan Epstein  
Christian and Jacqui Erdman  
Laurie Erwin  
Ellen Farber  
Val Fenti  
Allyson Ferer  
W.H. Ferer Co., LLC  
Stephanie Ferrandino  
Mr. Laurence Cohen and Ms. Carol J. Finley  
Dr. Joshua Fiske and Isabella Fiske  
Judi Forman  
Gregory and Marci Foster  
The Fox Foundation  
William Franke  
Jeff Franklin  
Fraternal Order of the Eagles Aerie #2197  
Mr. and Mrs. Heath Freeman  
Joseph and Nora Funaro

**“ I was diagnosed with Scleroderma in 2006. I know that research is the heart of figuring out how to manage and defeat this disease. Thank you for your hard work and all you do!! ”**

– Debra

Franco Transport, Inc.  
Cheryl Frederic  
Mr. and Mrs. William C. Frederic  
Craig Friedman  
Monica Friess and Dr. Henry Friess  
Howie Furst  
Gannett Foundation, Inc.  
Stacey Gearhart  
James Gergurich  
Dr. Edwin Gevirtz and Marilyn Gevirtz  
Randi Ginsburg  
Marianne Lowenthal and Wendy Glenn  
Mr. and Mrs. Charles E. Golden  
Alan and Barbara Goldenberg  
Dr. Ronald and Pamela Goldman  
Mrs. James P. Gorman  
Donald Greenberg and Beverly Daniels-Greenberg  
Jill Grey  
Michael Grey  
Douglas and Lynn MacDonald Groh  
Dr. Bruce Grossman and Cheryl Grossman  
Mr. and Mrs. Andy Guagenti  
John Gustafsson  
Gareth Gwyn  
Gail Hammer  
Hauske Family Foundation, Inc.

Jerome Jabbour  
Shal and Shelley Jacobovitz  
Ken Jeong  
Steven and Marilyn Joffe  
David and Sandra Joys  
Bob Kaliski  
John McKinley and Cindy Kane  
Woolf and Jude Kanter  
Mr. and Mrs. Jay Kasin  
Sheila Kennedy  
Don and Rae Anne Kinney  
Albert J. Klail  
Debra and Paul Kleban  
Jeremy and Meliss Kline  
Estate of Edward Klinger  
Amy Knell  
David and Wendy Knoller  
Steven and Ellen Koch  
Joni Kosmach  
Donna Krenicki  
Marc and Patricia Krieger  
Dr. David Lacey and Nancy Lacey  
John R. and Beverly J. Larson Foundation  
Michael and Jessica Lerner  
Mark and Linda Levine  
Steven and Linda Levine

## Our Generous Donors

### \$250 - \$999 (continued)

Mr. and Mrs. Eric Gabrielsen  
 Dave Galka  
 Letizia Gasparetti  
 Jeffrey & Cynthia Gault Family Giving Fund  
 Mr. and Mrs. Bruce E. Gerstein  
 Christian Vincent and Peri Gilpin  
 Jill and Scott Glenn  
 Monica Godsey  
 Bonni Goldberg  
 Rona Goldfarb  
 Don and Toni Goldstein  
 Dr. Sally Sehring and Dr. Bill Gonda  
 Robyn Goodman  
 Dr. Jessica Gordon  
 Mark Greenwood  
 Trudy Greenwood  
 Sam Grey  
 Michael and Wendy Grinberg  
 Jeffrey and Diana Grubman  
 Eustacchio and Merle Guadagnini  
 Betty Guilliams  
 Joseph Gunset

Kenneth Sunshine and Nancy Hollander  
 Serena Hong  
 Sharon and John Hopper  
 Catherine Horvath  
 Mr. and Mrs. Gene W. Hovendon  
 Elaine Hui and Dr. Thomas Hui  
 Laura Hunter  
 Melissa and Matthew Ippolito  
 Edward and Altamese Jackenthal  
 Erika James  
 Kirsten John  
 Anna Marie Jolley  
 Adam Kalish  
 Amanda Kallstrom-Fuqua  
 Eileen Karachin  
 Paul Kasin  
 Larry and Catherine Kasper  
 Mary Kass  
 Robert Katz  
 Jack and Rona Kaufman  
 Kimberly Keilty  
 Thomas W. Keilty

Justin Kurland  
 Mrs. Carrie Kusterbeck  
 Mrs. Patrice B. La Tourelle  
 Paul Lalinde  
 Burt and Trina Lampl  
 Denise Langer  
 Dr. Nathan Laubach  
 Anthony Lauro  
 Jack Lawler  
 Patti and Jeffrey Lawler  
 Dr. Clifford Lazarus and Donna S. Astor Lazarus  
 Kenneth and Ellen LeBlanc  
 Leo Lemere and Joe Lemere  
 Dr. Chuck Cowan and Dr. Rhonda Levitt  
 James Lillis  
 Rita Linkner  
 The Lions Club of Tolland  
 Charlene Little  
 Amira Littman  
 Mr. and Mrs. Aldis J. Liubinskas  
 Fran Lubow  
 Mr. Luebke  
 Eishin Machida  
 Edward Madigan  
 Samuel Kenberg and Marcella Magiera  
 Aqeel Mahesri  
 Huzaifa Mahesri  
 Owais Mahesri  
 Martin and Laurie Mai  
 Mr. and Mrs. Peter Maier  
 Larry Malace  
 Louis and Susan Malikow  
 Mr. and Mrs. Patrick C. Malone  
 Dawn Manjoney  
 Sandra Mann  
 Heidi and Lester Manzano  
 Dalton Martin  
 Julie and Eric Martin  
 Richard Marx  
 Maribet Mason  
 Mohamad Masri  
 Mrs. Joan Mayes  
 Michael McCall  
 Jaclyn and Ben McClain  
 Greg and Michelle McConville  
 Joseph McDaniel  
 Erin and Terence McGee  
 William and Patricia McGuire  
 Peter McPartlin  
 Michelle Meepos  
 Rita Meistrell  
 Dr. Charles Melone  
 Mr. Wallace D. Mersereau  
 Dr. Henry Metzger and Deborah Metzger  
 Deborah Micklos  
 Jacob Miles  
 Darya Miller

Craig Millian  
 Patrick Milner  
 Jolynn Mohr  
 Sara Rubin and David Montanari  
 Morgan Stanley Global Impact Funding Trust, Inc.  
 Jay Morris  
 Gabriella Morrone  
 Dr. Yael Hirsch-Moverman and  
 Mr. Oren Moverman  
 John and Nancy Mulhern  
 Mr. and Mrs. William Hugh Munn, II  
 Curt Munson  
 Keith Munson  
 Dan Murphy  
 John Murphy  
 Duncan and Sandra Murray  
 Lauren and Tam Murray  
 Melissa Nathanson  
 National Christian Foundation – Chicago  
 Carolyn Nesbitt  
 Christopher Ng  
 Lucille and David Novak  
 Mr. Alan Oakland  
 Jeff and Pam Oberschelp  
 Adrienne Olsen  
 Michael and Michelle Osterman  
 Constance Owen  
 Joseph Palsa  
 Mr. William J. Rountree and Kathleen M. Parent  
 Col. Kerry Parker and Josephine Parker  
 Rene Parra  
 Scott and Karen Patterson  
 Brett Paul  
 Cathy Paul  
 Debbi Pearlman  
 Josh Peck  
 Pella Rolscreen Foundation  
 Amy Duval and Lil Peloquin  
 Julie Perez  
 Kurt and Wendy Peterson  
 Frederick and Julia Pfannenstiehl  
 PHE, Inc.  
 Yvonne Pinedo  
 John and Cynthia Pohlen  
 Frank Pond  
 Dr. Robert Poole  
 Dr. Robert Press  
 Joshua Raab  
 Janice Rauh  
 Dylan Reese  
 Phyllis and Ned Rendell  
 Dr. Natalie Karouna-Renier and Mr. Craig Renier  
 Ronald Renzi  
 Stephan Riedmaier  
 Robert Riggs  
 Kelly Rizzo  
 Al Roker and Deborah Roberts

David Roche  
 Rosemarie Rogers  
 Bill Rohrbach  
 Elisabeth Root  
 Robert and Jeannie Rosenthal  
 Peter Rota  
 Mr. and Mrs. Jonathan Roth  
 Lisa Rothblum  
 The Roy Family Trust  
 Mr. and Mrs. John R. Russell  
 Bryan Rutland  
 Kelly Ryan  
 Mark Darling and Brenda Sager  
 Ms. Paula A. Johnson and Mr. Robert A. Sands  
 Harris Schatz  
 Henry and Pam Scheeringa  
 Phillip and Lynne Schliem  
 Michael and Sandra Schulman  
 Scleroderma Foundation  
 Nick Scott  
 Diana Shaffer  
 Dr. Victoria Shanmugam  
 Sam Shefrin  
 David R. Sheil  
 Steve and Barbara Shepard  
 Dr. Steve Shin  
 Hannah Shostack  
 Shane Shove  
 Dianne McCutcheon and Dr. Jeffrey Siegel  
 Terri Silber  
 Linda Lave and Sizemore  
 William Slattery  
 Austin and Debi Smith  
 Bob and Audrey Sockolov  
 Dr. William Sonis  
 Linda Sorge  
 Mr. Louis Spiesberger and Dr. Bonnie Spiesberger  
 Michael and Diana Staiano  
 Mark Stamford  
 Elaine and Buz Stancil  
 Kenneth Steinhart  
 Mark Sumwalt  
 Mary Ann Swaim  
 Mr. and Mrs. Robert L. Swenson  
 Roselyne Swig  
 Nicholas Tabarrok  
 Terri Tennant  
 Rebecca Milkman and Craig Thomas  
 Christine Tobin-Presser  
 Dr. Mark Trachtman and Abby Trachtman  
 Dr. Brett Trockman and Sharon Trockman  
 Kelly Tuomey  
 James and Anna Marie Turner  
 Dr. Nathan Turner  
 United Therapeutics Corporation  
 John Uvena  
 Allison Vetter

“*Keep up the good work! I hope and pray soon there will be a cure for the many people who suffer from this terrible disease.*”

– Rosita

Adrienne Vien  
 Tom and Barbara Votel  
 Grant Wabnitz  
 Thomas and Carolyn Wachter  
 Lisa Waldman  
 Susan Waldron  
 Brian Walsh  
 Jean-Paul Wardy  
 Carolyn and Kevin Waters  
 Stacey and Scott Webb  
 Rina Mimoun and Scott Weinger  
 David and Tracy Weinstein  
 Laura and Dan Weyl  
 Dr. Barbara White  
 Ellen White  
 William and Jane Whitehurst  
 Brian Whitmer  
 Allison Harden and Laura Wiederaenders  
 Dr. Jessica Gordon and Dr. Horatio Wildman  
 Amanda Winchester  
 Amanda Winters  
 Ms. Patricia Wong and Mr. Austin Kim  
 Steven and Julie Wright  
 Tom and Joanne Zaccaro  
 Alice Tobin Zaff  
 Terri Zawacki  
 Frank and Catherine Zini  
 Mike Zinser  
 Elizabeth Crawford and Carmi Zlotnik

“*My wife has scleroderma and I see day in and day out the toll it takes on her. SRF is such a great way for me to help her and others in the future who end up with this disease.*” – Laura

Mr. Christopher P. Guthrie and Mrs. Lauren Borchardt Guthrie  
 Heidi Haas  
 The Haberman Foundation  
 Dennis Hadden and Marcia Reska-Hadden  
 Crystal Hammer  
 Estate of Nellie T. Hay and Susan C. Hay  
 Barbara Jo and Michael Heenan  
 Joe and Jane Hegleman  
 Michael Heilala  
 Linda Heinberg  
 Harris and Carrie Herman  
 Dr. Wayne Herman and JoAnne Herman  
 Steve Hernandez  
 Melanie Hill  
 Roberta Hines  
 Dr. Susan Hinman  
 Kristen Hipwell  
 Lauren Hissrich  
 Robin Hoffmann

Mr. and Mrs. Scott W. Kilrea  
 Mr. and Mrs. Roger Kimber  
 Keitha Kinne  
 Charles Klein  
 Wendy Klein  
 Charity Kling  
 Casey Knight  
 Don Knight  
 Kimberly Knoller  
 Dr. Marki Knox  
 Angela Kooiker  
 Julia Kordestani  
 Ilene Kramer  
 Karina Krepp  
 The Krupa Family Trust  
 Peter Kruse  
 Mr. Alan Kuebler  
 Joseph and Patricia Kuhar  
 Torina Kuhlman  
 Guzuvu Desikan and Mahesh Kumar

## In Memory

We express our deepest sympathy to the families and friends of the following people in whose memory gifts were made during our fiscal year.

Nancy G. Abrams  
Tara Alexander  
Bryce Allen  
Lillian Alpert  
Lois Alviar  
Walter G. Amstutz  
Jeanette Anderson  
Sandra Jean Andrae  
Gail Andrews  
Elaine Aresco  
O'Dell Ayres  
Deborah Layton Bailey  
Shirley J. Ballard  
William P. Banks  
Amelia Barnes  
Susan Bash  
Joyce Baskin  
Lorraine D. Batton  
Joyce L. Bauer  
Thomas Bautz  
Denise Beaulé  
Martin Bednarski  
Walter Bednarski  
Margaret Beene  
Susan Belisle-Hall  
Margaret Bellano  
Clara Benedetti  
Gwen Benford  
Dorothy L. Benoit  
Ruth Bernhard  
Trena Bernon  
Dorothy V. Betz  
Lois Bieniek  
Susan Bjork  
Barbara Blake  
Lloyd Bowman  
Kimberly Brannon  
Jean Brooks  
Frances Brown  
Marjorie Brown  
Jerry Bruinooge  
Kathy Bustamante  
Leroy Frankin Byers  
Carol Young Calder  
Regina Callahan  
Michael Capello  
Beatrice Carter  
Joann Casso  
Marilyn Cervantes  
Florence R. Chait  
Jeffrey A. Charapp

Greg Christensen  
Heather Christians  
Betty Chutkow  
Tess Ciancolo  
Adrienne S. Cimerberg  
Eileen Clary  
Barbara Clifford  
Bettie Lee Smith Cline  
Sam Cobb  
Debra Comer  
Patricia Connors-Zini  
Elizabeth Council  
Eric Crandall  
Nellie Cree  
Abelino Cruces  
Jeanette Curfiss  
Christine N. Cusack  
Bob Dailey  
Elizabeth Ann Dale  
Anna Damiani  
Evelyn De Man  
Russell A. DeGraw  
Carole DeGrenier  
Megha Dhawan  
Brent Dobbie  
Matthew Dobie  
Jamie Doherty  
Vernon Dunn  
Emma S. Duvall  
Patricia Dziak  
Cathy Eddy  
Rori Eisenberg  
Sally English  
Ramona Esparza  
Kay Etow  
Thelma Ewell  
Guido J. Fares  
Patrice Fauver  
Jim Fecko  
Marilyn Feehan  
Alyce Ferrari  
Rosina Flaccavento  
Shane M. Flann  
Lori Dana Forman  
Michael H. Forman  
Charlie Freeny  
Layne Fudge  
Marnee Galbraith  
Annette F. Garris  
Catalda Gasparetti  
Betty Gayle

Nancy Gevirtz  
Judith A. Giangrande  
Leslie S. Gillespie  
Punim Goldberg  
Francis Goldstein  
P.J. Gomez  
Lisa Barkin Goodman  
Sharonda Graham  
Harriet Grauer  
Chanelle Monique Green  
Gloria Bernice Grey  
Marilyn Grieshop  
Sylvia Grossman  
Christopher Guadagnini  
Margaret Guelker  
Dianne Hafley  
Sandra Hagen  
Carol Jean Hambleton  
Jackie Harmon  
Sandra Hazelhofer  
Dorothy Heinlein  
Ken Heller  
Jennifer Hemley  
Martha Robles Hernandez  
Marilyn P. Hines  
Kathryn Doub Hinman  
Elsie K. Hoch  
Sally Holmes  
Stacie B. Hooper  
Marcy Howard  
Ruby K. Hullum  
Mary Nell Hutchens  
Shelly R. Jenkins  
Galen Jerry  
Nina L. Karouna  
Cathi Keilty  
Mary T. Keith  
Joyce Deveau Kennedy  
Priscilla B. Kenyon  
Yasmin Khan  
Sandra J. Kinard  
Ann Kleban  
Evelyn C. Klepec  
Lauri Knedllik  
Robert Koegel  
Arthur Koellmer  
Rhoda Koeppl  
Joan A. Kosmach  
Helmut Kramer  
Sandra Kuebler  
Richard Kusterbeck

Leon T. Lambeth  
Beverly J. Larson  
Joan Lauer  
Daniel Lave  
Yuet Wa Law  
Barbara Pittman Lawler  
Ann LeBlanc  
John LeBlanc  
Beverly Leigh  
Frederick Leone  
Mrs. James Lillis  
Rosalinda R. Lillis  
Jance Loewenstein  
Mary Lofstrom  
Michael Lorento  
Donald Lovelace  
Janice Lowry  
Heidi Lulich  
Jeffrey H. Mace  
Shigenobu Machida  
Helen Mai  
Jeanette Malanowski  
Thomas I. Malanowski  
James L. Mammoser  
Joanne Marcus  
Frank Marisi  
Richard Markell  
Gloria Marotta  
Sharon Martinez  
Luisiana Mateo  
Andrea B. Matis  
Andrea Matis  
Gale Matis  
Perry Mayes  
Ruby C. McCall  
Jo Ann Meaney  
Teri Mikulski  
Therese R. Mikulski  
Jerald Miller  
Pam Miller  
Rita Miller  
Lena Moccia  
Shirley Belo Mocho  
Richard J. Mohr  
Phyllis Monistere  
Sharon Monsky  
Sharon Monsrud  
David W. Monzo  
Erin Moore  
Linda Moore  
Gino Morosin

**“My mother died of systemic scleroderma after a progressively painful battle with the disease. She inspired and encouraged me to advocate for others less fortunate in life and health.”**

– Christine

Helen Mosley  
Sammy Muhlfelder  
Serena Mulston  
Dolores (Lorie) Murphy  
Sheila Hill Murray  
Ellen Nathanson  
Lucia Nelson  
Anna Nieckula  
Valerie Niles  
Norma Nixon  
Laurie A. Noonan  
Andrea J. Oakland  
Valerie Oles  
Kay Ostrom  
Jackie B. Overman  
Connie Palladino  
Jonathan Parker  
Pamala Perkerewicz  
Grace Pezrow  
Dolores Piehl  
Dorothy Pietras  
James Pietras  
Beverly M. Pizzuto  
Carlin Popke  
Charles Popke  
Ricardo Porter  
Lee Prinslow  
Dagmar Pulkkinen  
Clifden Purcell  
Anne S. Rabin  
Alissa Reich  
Ben Reiff  
Ingrid Renken  
Phyllis Renzi  
Gwen Renzullo  
Ann Reynolds  
Carol Reynolds  
Debi Rizzo Rivelli  
Lorraine Roy  
Linda K. Royer

Roy Rufh  
John Sabina  
Andi Saget  
Ben Saget  
Dolly C. Saget  
Gay Saget  
Juanita Salazar  
Mary Salim  
Adele Sanford  
Suzanne Saupp  
Steven Schliem  
Janet Schmidt  
Richard Sgarlato  
Jean L. Shanklin  
Barbara K. Shepard  
Catherine Showalter  
Christine Dyne Silver  
David Smith  
Enid Smith  
Rhoda Solow  
Nancy Sommers  
Jo Ann Sonis  
Susan Spivack  
Anthony Staiano  
Aaron Steele  
Lenore Steinhart  
Sophie Stepien  
Goldie Stern  
Ken Stern  
Kyran J. Stevenson  
Marjorie Stolker  
Kim Stone  
Ann Sullivan  
Edith Terry  
Bernice Tesmer  
Liz Thompson  
Kristi Thurman  
Sue Tiernan  
Gail Tobin  
Norma Torres

Maryanne Trochim  
Martin Trotsky  
Carmela Trupia  
Gwendolyn S. Turner  
Marjorie B. Turner  
GD Uma  
Teresa M. Valocchi  
Cornelia Vanderlee  
Carolyn Venuti  
Anne F. Votze  
Scott Wachter  
Marilyn Wanczyk  
Peggy Wanner  
Dottie Webster  
Henry Wedemeyer  
Mary Weiner  
Laura McGuire-Weinfeld  
Beatrice Weitzler  
Helen Lenora Welch  
Lorraine Wempner  
Mary A. Wick  
Shirley Willman  
Bonnie Wiseman  
Barbara E. Wollenburg  
Cynthia R. Yagi  
Keith Yagi  
Joseph P. Ziegler

# In Honor

Gifts made to the Scleroderma Research Foundation in honor of special people and milestones have a significant impact on our research. The following individuals were recognized during our fiscal year by family and friends who made a gift in their honor:

Adnah United Methodist Church  
 Sheri Aguilar  
 Megan Azzi  
 Kristina Becker  
 Melita Belgrave  
 Daniel Benamoz  
 Rosalind Bienz  
 Debbie Bischoff  
 Charles Borg  
 Beth Ann Bosick  
 Robert L. Boyett  
 Patti Bozeman  
 Kevin Brannon  
 Laura Brogan  
 Ursula A. Brown  
 Karen Bryan  
 Loretta G. Butler  
 Bette Callaway  
 Amy Capell  
 Susan Cash  
 Maxine Chayka  
 Joan Collier  
 Mary Concemi  
 Susie Cooper  
 Judith Corbin  
 Gloria Crown  
 Kathy Cumberledge  
 Maureen D'Ambrosio  
 Donna G. Dayer  
 Dana Delany  
 Rebecca J. Denlinger  
 Irene DiMaria  
 Tripp Donaldson  
 Glenda Dunham  
 Linda Durnan  
 Livia Eden Hamroff  
 Jeffrey L. Eisenberg  
 Trenton Eisenberg  
 Laura Engel  
 Luke Evinin  
 Teri Evoli  
 Susan Feniger  
 Rebecca Fisher

Yvette Gambrel  
 Jeffrey Gevirtz  
 Catherine A. Gibbons  
 Randi Ginsburg  
 Ilona Goddard  
 Vera Sue Golden  
 Connie Graham  
 Brandy Green  
 Bruce Grossman  
 Margaret Gutierrez  
 Sharon Habat  
 Nancy Hazelton  
 Barbara Jo Heenan  
 Barbara Hendricks  
 Evelyn Herwitz Harris  
 Dan Hopper  
 Olivia Howard  
 Winifred Huberty  
 Harry W. Hunter  
 Roberta S. Hunter  
 Rachel Johnson  
 Kathryn Karson  
 Rona Kaufman  
 Saville Kellner  
 Margaret Kinaitis  
 Katherine L. Klos  
 Margaret Kollitides  
 Anna Korbel  
 LaRae Kuhar  
 Dianna Lambert  
 Mindy Lange  
 Fran Lewbel  
 Lenora Lewis  
 Bill Lindgren  
 Todd Logan  
 Laura Lopez  
 Dawn Manjoney  
 Steven Marcus  
 Katie McGrath  
 Lynn Merel  
 Holly Middleton  
 Lucille Miller  
 Tom Miller

Janice R. Moffett  
 Barbara Musco  
 Josephine Parker  
 Julia Pfannenstiehl  
 Diana Pralgo  
 Shelley E. Raaths  
 Blossom Reich  
 Maxine E. Reiff  
 Dawn Ressler  
 Robert M. Reznick  
 Sandra Roeder  
 Landry Rufo  
 Bob Saget  
 Suzanne Salerio  
 Bobbi Salmon  
 Tami Sauer  
 Cindy Schlett  
 Vicky Schneider  
 Sophie Anne Seaman  
 Janet Settle  
 Merle Shapiro  
 Christine A. Silver  
 Steven Smith  
 Beth A. Stewart  
 Barbara Sunseri  
 Angela Switzer  
 Anne Terrell Masters  
 Wilma Jane Timmins  
 Pat Van Gorp  
 Elizabeth Vogel  
 Luke Wachter  
 June Waldman  
 Eve Weinberg  
 Beverly Weingartz  
 Marlene Weintraub  
 Nancy Whitaker  
 Heidi Wilensky  
 Maryclaire Wilkinson  
 Deann Wright  
 Jack Zerobnick  
 Barbara Zimmerman

# Your Gifts At Work

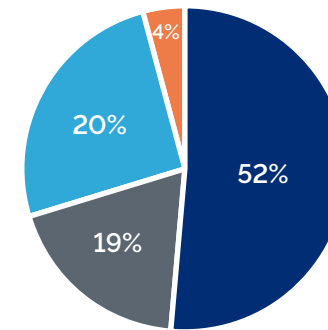
## Financial highlights

At the SRF, we take seriously our responsibility to the scleroderma community and we value donor trust above all else. To earn and maintain this trust, we work hard to maximize every dollar invested to advance research with the greatest potential to benefit patients and families. Research is at the center of all we do and it will continue to drive us until we ultimately eradicate this disease.

*\*Note: As we have changed our fiscal year; this report covers two periods - FY 2019 covering the 12 month period of May 1, 2018 through April 30, 2019 and a stub year period for the 6 remaining calendar months through December 2019. We will report henceforth on a calendar year basis.*

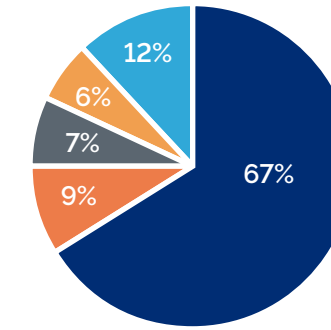
### FY May 2018 – April 2019

Total Annual Revenue: \$5.7M



- Contributions – \$2.9M
- Bequests – \$1.06M
- Events – \$1.5M
- Investments – \$200K

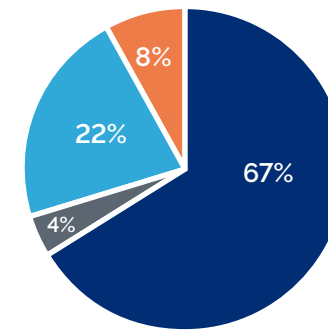
Total Annual Expenses: \$3.8M



- Research – \$2.5M
- Education – \$326K
- Administration – \$265K
- Fundraising – \$211K
- Events – \$457K

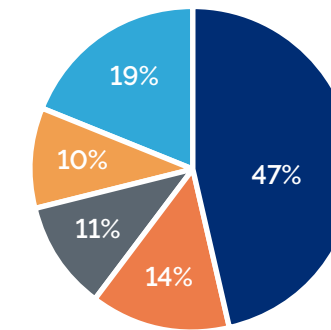
### Stub Year May 2019 – December 2019\*

Total Revenue (6 Mos.): \$3.2M



- Contributions – \$2.1M
- Bequests – \$115K
- Events – \$712K
- Investments – \$246K

Total Expenses (6 Mos.): \$1.3M



- Research – \$609K
- Education – \$180K
- Administration – \$145K
- Fundraising – \$124K
- Events – \$245K

*\*Majority of research expenditures occurred in Q2 and are not reflected in stub year totals.*

**“Someone I care about has just been diagnosed. Please find a cure!” – Roberto**